

Judges' Choice

The Basenji

History tells us that this fascinating dog was a palace dog of the Pharaohs, and for proof offers paintings of the dogs in ancient tombs, to which the modern version certainly bears a striking resemblance. In the seventeenth century, they were sighted in the Congo, and it is from there that they have been imported to Britain. A first pair arrived in Britain in 1936 and these produced the first English litter. The next year, when the puppies were exhibited at Crufts, police were required to keep the crowds on the move, so great was the interest in the breed.

The Basenji is clean in both outline and habits – cat-like in the way in which he cleans his feet, and odourless – thus making him a perfect household companion.

He is known as the 'barkless dog' – a unique characteristic of the breed – and expresses his pleasure with a crowing-yodelling noise. The wrinkles on his head give him a quizzical expression. He is curious, self-confident and friendly, and becomes very attached to his human family.

BREED STANDARD

General Appearance Lightly built, finely boned aristocratic-looking animal, high on leg compared with its length, always poised, alert and intelligent. Wrinkled head, with pricked ears, proudly carried on a well arched neck. Deep brisket runs up into a definite waist, tail tightly curled presenting a picture of a well balanced dog of gazelle-like grace.

Characteristics Barkless but not mute, its own special noise a mixture of a chortle and a yodel. Remarkable for its cleanliness in every way.

Temperament An intelligent, independent, but affectionate and alert breed. Can be aloof with strangers.

Head and Skull Flat, well-chiselled and medium width, tapering towards nose, with slight stop. Distance from top of head to stop slightly more than from stop to tip of nose. Side lines of skull taper gradually towards mouth, giving a clean-cheeked appearance. Fine and profuse wrinkles appearing on forehead when ears pricked, side wrinkles desirable but not exaggerated into dewlap. Wrinkles more noticeable in puppies, but because of lack of shadowing, not as noticeable in tricolours; black nose desirable.

Eyes Dark, almond-shaped, obliquely set, far-seeing and rather inscrutable in expression.

Ears Small, pointed, erect and slightly hooded, of fine texture, set well forward on top of head, tip of ear nearer centre of skull than outside base.

Mouth Jaws strong, with a perfect, regular and complete scissor bite, i.e. upper teeth closely overlapping lower teeth and set square to the jaws.

Neck Strong and of good length, without thickness, well crested and slightly full at base of throat with a graceful curve accentuating crest. Well set into shoulders giving head a 'lofty' carriage.

Forequarters Shoulders well laid back, muscular, not loaded. Elbows tucked in against brisket. When viewed from front, elbows in line with ribs and legs should continue in a straight line to ground giving a medium front. Forelegs straight with fine bone and very long forearms. Pasterns good length, straight and flexible.

Body Balanced with short, level back. Ribs well sprung, deep and oval. Loin short-coupled, deep brisket running up into definite waist.

Hindquarters Strong and muscular, hocks well let down, turned neither in nor out, with long second thighs and moderately bent stifles.

Feet Small, narrow and compact, with deep pads, well arched toes and short nails.

Tail High set, with posterior curve of buttock extending beyond root of tail giving a reachy appearance to hindquarters. Curls tightly over spine and lies closely to thigh with a single or double curl.

Gait/Movement Legs carried straight forward with a swift, long, tireless, swinging stride.

Coat Short, sleek and close, very fine. Skin very pliant.

Colour Pure black and white; red and white; black, tan and white with tan melon pips and mask; black; tan and white. Brindle, red background with black stripes, the more clearly defined the stripes the better. The white should be on feet, chest and tail tips. White legs, blaze and white collar optional.

Size Ideal height: dogs: 43cms (17ins) at withers; bitches: 40cms (16ins) at withers. Ideal weight: dogs: 11kgs (24lbs); bitches: 9½kgs (21lbs).

Faults Any departure from the foregoing points should be considered a fault and the seriousness with which the fault should be regarded should be in exact proportion to its degree and its effect upon the health and welfare of the dog.

Note Male animals should have two apparently normal testicles fully descended into the scrotum.

A Breed Standard is the guideline which describes the ideal characteristics, temperament and appearance of a breed and ensures that the breed is fit for function. Absolute soundness is essential. Breeders and judges should at all times be careful to avoid obvious conditions or exaggerations which would be detrimental in any way to the health, welfare or soundness of this breed. From time to time certain conditions or exaggerations may be considered to have the potential to affect dogs in some breeds adversely, and judges and breeders are requested to refer to the Kennel Club website for details of any such current issues. If a feature or quality is desirable it should only be present in the right measure.



A promotional photograph, used in the lead-up to Crufts 1950, of Diana Berry of the Sin kennel with four of her Basenjis. She owned the breed's first dog CC winner, made up a number of Champions and went on to establish a highly-successful strain of Ibizan Hounds. Photo by Sport and General

We asked a number of Championship Show judges to select their three greatest Basenjies of all time. The dogs could be from the past or the present and from anywhere in the world. We have asked our judges to avoid choosing dogs with which they have been closely associated. However, they can make reference to them if they are significant.

Judges' Choice

BEN REYNOLDS-FROST SIN



Berry, won the first two dog CCs in the

I have been very fortunate to have judged many beloved Basenjis in many parts of the world and to have seen in the last 40 years some wonderful dogs. My late mother, Diana

breed with Ch Sunspot of the Congo born in November 1941 and bred by Veronica Tudor-Williams.

A great dog of the '60s was **Ch St Erme Fula Falcon of the Congo** owned by the late Mirrie Cardew. This chestnut/white dog won 29 CCs. He had the correct head and wonderful arched neck with correct face wrinkle, excellent topline and tailset, albeit a single curl.

More recently I had the pleasure to judge **Ch Jethard Cidevant** owned by Paul Singleton. He had one of the best heads of the day, with excellent neck, topline, front and feet. His movement was to die for. I awarded him the CC and BOB at six and a half months.

In 2007 I was asked to judge the Basenji Club of Victoria in Australia. At this show I found the greatest Basenji I had ever judged to date in the form of **Aus Grand Ch Afrikenji Hot Sumaknight** owned by Helen Veless. He was just mind-blowing, a chestnut/white dog I was unable



Aus Grand Ch Afrikenji Hot Sumaknight
Photo by Doreen Duffin

to fault. He fitted the standard to perfection. Needless to say he had won everything in his path and has recently been retired.

It is very hard to mention just three in this report without giving a mention to the great dog of his day Ch Lograk Lubilash of Littlebreach owned by Barbara Percival who dominated the show ring in the early '60s including winning the Group at Crufts.



Ch St Erme Fula Falcon of the Congo
Photo by CN Cooke - courtesy of the Kennel Club Picture Library

CCS
**He was
mind-blowing...
I was unable
to fault**

Supporting information for the Basenji

CHAMPIONSHIP SHOW JUDGES 2011

Hound Association of Scotland	Mr Graham Hill
Birmingham Dog Show Society Ltd	Mrs PD Varley
Scottish Kennel Club	Mr Jeff Horswell
Southern Counties Canine Association	Mrs Marja Talvitie
Blackpool & District Canine Society	Mrs DA Kenis Pordham
Windsor Dog Show Society	Mr Danny Cullen
East of England Agricultural Society	Mr I Newbold
Northern Basenji Society	Mr Christian Jouanchicot
Hound Association	Mrs Bernadette Stoneham
Bournemouth Canine Association	Mr Gavin Robertson
Welsh Kennel Club	Mr Frank Kane
Richmond Dog Show Society	Mrs Frances Dodd
Basenji Club of Great Britain	Mr Dan Ericsson
Basenji Owners' & Breeders' Association	Ms Sharon Thompson
Ladies' Kennel Association	Mr Paul S Singleton

BREED CLUBS

BASENJI CLUB OF GREAT BRITAIN

Mr S Bell ☎ 01832 293422
www.basenjiclubofgb.org

BASENJI OWNERS & BREEDERS ASSOCIATION

Miss L Tyler ☎ 02392 504321
www.basenji-org.net

NORTHERN BASENJI SOCIETY

Mr L Siddall ☎ 01422 886728
www.northernbasenji.org.uk

BREED RESCUE CONTACT

BASENJI BREED RESCUE

Mr S Bell ☎ 01832 293422

CRUFTS BOB WINNERS 1984 - 2011 only

1984 Ch Horsleys Sirlucilla	1994 Ch Nastase Seventies Star	2003 Dan & Lux Ch Skyewalker Storm of Whitney (ATCONK)
1985 Ch Neyeliz Dazza of Adoram	1995 Ch Zizunga Queen Bee	2004 Ch Maridadi Kanzi
1986 Ch Horsleys Sirsarah	1996 Ch Horsleys Sir Gustave	2005 Ch Akmar Akhetaten at Tokaji
1987 Ch St Erme Jolly Swagman	1997 Ch Jaswyn Thalia at Kiamera	2006 Ch & Am Ch Classics Million Dollar Baby at Tokaji (Imp)
1988 Ch St Erme Jolly Swagman	1998 Ch Embeau Sequinn at Robelroy	2007 Ch & Am Ch Classics Million Dollar Baby at Tokaji (Imp)
1989 Ch McEnroe The Star Player	1999 Custos Stryke A Pose	2008 Ch & Am Ch Classics Million Dollar Baby at Tokaji (Imp)
1990 Ch Ituri Forest Jewel	2000 Ch Kiamera Code Red	2009 Ch & Am Ch Classics Million Dollar Baby at Tokaji (Imp)
1991 Ch Tenki Tambeau	2001 Ch Jethard Cidevant	2010 Ch & Am Ch Classics Million Dollar Baby at Tokaji (Imp)
1992 Ch Taemwadjsi of Adoram for Woodella	2002 Fr, Am & Lux Ch Signet Jay-R Hot Damn (ATCUSA)	2011 Kissangani Dream Maker at Djozer
1993 Ch Tiger Tabasco at Jasmorne		

One can only make a personal interpretation of the word 'greatness' and in my opinion, only choose from dogs that one has seen.

Ch Jethard Cidevant is the only Basenji to go Best in Show at Crufts. He was two when he achieved that award, but he had shown from puppyhood that he had the conformation and attitude to be a top winner. His first Group win was as a junior at WELKS. Cid was well-balanced, had a good topline, correct tailset, typical head with dark eyes, good reach of neck, long legs, good movement, elegant but masculine. He sired CC winners and Champions to several bitches.

Ch Neyeliz Castanea, until recently, held the bitch breed record with 24 CCs. She epitomised the standard, being elegant and gazelle-like.

Her outline was correct, she had a long, crested neck set into well laid shoulders and a typical Basenji head with a short muzzle, dark almond eyes and carried a well curled placed tail. Added to this, she had that "I am here, look at me" air.

Ch & Aus Ch Afrika Royal Challenge of the Congo, imported and owned by Veronica Tudor-Williams, won seven CCs and three RCCs with different handlers, a testament to his temperament. He answered the standard well, elegant, fine boned, good head, neck and shoulders, the coat fine and a beautiful colour. He strode with the typical swinging gait of the breed. A tightly curled, well placed tail finished the picture. His progeny from several bitches earned 78 CCs – a breed record, which I believe has not been bettered.



Ch & Aus Ch Afrika Royal Challenge of the Congo
Photo by Michael Trafford



Ch Jethard Cidevant Photo courtesy of the Kennel Club Picture Library

IRENE TERRY
ZIZUNGA

There are many top winning dogs who justify their high placings but it is the combination of elegance and an aristocratic air, together with a larger than life personality that defines the outstanding Basenji.

My first choice is **Ch Neyeliz Castanea**, for many years the bitch CC record holder. She had all the attributes that define the breed; classic outline, fine bone, a beautiful head and carriage and elegant neck, with a correct level topline and well shaped rear end, everything just flowed. She was always impressive in the ring and, at a time when competition was much greater, she was an outstanding ambassadress for the breed.

My second choice is our most famous Basenji, **Ch Jethard Cidevant**, Best in Show at Crufts in 2001. Again he scored with a classic outline, leggy, masculine but elegant, a real eye-catcher on the move with the effortless unexaggerated trot that is the true movement of the breed, and nowhere was this more apparent than on the big green carpet at Crufts.

My third choice is **Ch & Aus Ch Afrika Royal Challenge of the Congo**. Imported by the doyenne of the breed, Veronica Tudor-Williams, he was not campaigned as widely as he should have been due to Veronica's failing health. He won seven CCs with a variety of handlers, but in different circumstances would have achieved far more. A square, leggy dog who typified the best points of the breed, he scored in good conformation and movement. He made a lasting impression on the breed as a sire, passing on his many attributes, thus realising the hopes Veronica had for him when he was imported.

PAUL SINGLETON
JETHARD



My three choices are in no particular order. On my first judging appointment abroad I 'found'

Aus Ch Jebelmarra Harum Scarum at the Basenji Club of New South Wales and made him BIS. He is, for me, a very typical Basenji with exactly the correct outline for the breed. Along with his many breed attributes, he presents a picture of substance and elegance with enough length of leg and typifies the 'spitz' heritage of the breed. He has sired over a dozen Australian Champions to date.

Ch, Fin, Dan & Int Ch Faraoland Xcuse Me Desmond is my next choice. I found this dog on a judging appointment in Finland. Such a beautiful quality dog with all the elegance and length of leg required. Exactly my sort of lightly

built male with a really lovely headpiece, a firm topline and really excellent movement. While he was campaigned to his English title he was used to produce three litters, from which he has three Champion children and four other CC winners.

Although he was well before my time, my next choice

is **Ch Lograk Lubilash of Littlebreach**. From photographic evidence he would appear to be a model for the breed. Cobby with enough substance, while retaining quality and elegance, a decent length of leg and a short enough back coupled with a strong, sound build. In the photos I have he appears a shade long in muzzle but that is nit-picking on an otherwise excellent dog.

It would be remiss of me not to mention my own **Ch Jethard Cidevant** – world famous for winning BIS at Crufts 2001. Cid took the breed to a new level in Britain.

“
He is, for me,
a very typical
Basenji”



Aus Ch Jebelmarra Harum Scarum Photo by Mzalia

Judges' Choice

ZENA THORN-ANDREWS DRAKESLEAT



I feel the present day hounds have somewhat strayed away from the true hunting hound and have therefore picked older hounds which show the correct type and structure of the ancient hound.

Ch Carnival of the Congo born in 1953, winner of 13 CCs from 13 judges, and six times BIS. Just three generations off hunting dogs, she is perhaps much truer to a good, honest working conformation than the Basenjis of today. I just love Carnival's head, neck and well filled in front. She was deep enough in chest, had that true quizzical expression showing forehead and side wrinkles, and correctly shaped eyes.

She was short enough in back and had a lovely tightly curled tail carried close to her back. I wish I had seen her in the flesh!



Ch Carnival of the Congo
Photo courtesy of Zena Thorn-Andrews

Ch The Jester of Courtlands was born in 1974. A red and white male, winner of eight CCs and at least two seconds in Groups at Championship shows. He looked so elegant and shapely, of correct proportions, with a perfect topline and tight tail, fine bone and ideal feet. He had the loveliest of heads, with parallel planes, a well wrinkled forehead and hooded ears. He was fine at the withers, and so neat and well made behind.

I much admired the stunning **Ch Lograk Lubilash of Littlebreach**, born in 1961, and also of good hunting and working type, owned by Barbara Percival, and winner of 10 CCs, and the Group at Crufts in 1963. He just beats Connie Graham's **Ch Colnel Phaeton of Courtlands**, winner of 15 CCs, and three Groups. Both these hounds looked to be

lovely Basenjis with beautiful crested necks, pleasing overall shapes and size and neatly carried tails.



Ch The Jester of Courtlands
Photo courtesy of Zena Thorn-Andrews



Ch Lograk Lubilash of Littlebreach
Photo by Thomas Fall - courtesy of Zena Thorn-Andrews

IRENE HORNER BOKOTO



My first choice has to be a bitch that I most admired as she had the most wonderful head, **Ch Petal of the Congo**. Petal was one of the most feminine and well constructed bitches in a plethora of good Basenjis. She was one of many Congo-bred Basenjis that went on to be the foundation of many kennels both here and abroad. She had decent bone coupled with a good length of leg, nice shoulder placement and super neck, the correct shaped eye, short muzzle and an

abundance of well defined wrinkle. A super fine coat and pliant skin completes the picture.

My next choice has to be **Ch Colnel Phaeton of Courtlands**. Correctly defined angulation both fore and aft together with a good topline and well set on tail and excellent bone structure. He had a typical Basenji head with correct short muzzle, plenty of wrinkle and that far seeing look that is characteristic to the breed. His excellent pasterns were a copybook for the breed. His coat was of superfine texture with the correct orangey-red colour set off by silvery white neck, legs and points.

My third choice is **Ch, Fin, Dan & Int Ch Faraoland Xcuse Me Desmond** bred by Helena Strömbergt in Sweden. He is beautifully balanced with a sharp outline; from the correct angulation of his front elevation to the rear quarters, giving a good drive and showing off his well set tail and carriage. His movement is neat - no excessive waste of power here. This boy has a lovely strong but elegant neck and his feet give him that all important lift when he starts to move. His temperament is lovely and he has a good rapport with his owner.



Ch Petal of the Congo
Photo by CW Cooke - courtesy of the Kennel Club Picture Library



Ch Colnel Phaeton of Courtlands
Photo courtesy of Irene Horner



Ch, Fin, Dan & Int Ch Faraoland Xcuse Me Desmond
Photo courtesy of Irene Horner

GLENWAY DYMOCK

AFRIKA



One does not need to have a huge romantic sensibility in order to feel captivated by the multi-coloured tapestry which is this breed's history. In this context, it is impossible to mention the 'greats' without thinking of African imports such as Bereke and Bongo of Bleau as well as Amatangazig and Fula of the Congo.

I hope I may be forgiven for choosing two stud dogs I never saw in the flesh. I have based my assessment of them on various press clippings and photographs.

My first choice is **Ch Fulafuture of the Congo**. A beautiful dog with the bonus of being a top sire – his blood was in great demand worldwide. Masculine yet elegant, correct long forearm, gorgeous head, super earset, ideal high-set tail, nothing overdone, an absolute blueprint for correct Basenji type. Without question, the breed's 'watershed' dog.

Secondly, I choose **Am Ch Cambria's Ti-Mungai**. For a number of years the top stud dog in the US. Super long legs, plenty of daylight under him, clean bone, long neck, well-curved tail, very clear tan markings. Helped enormously to popularise tricolour Basenjis



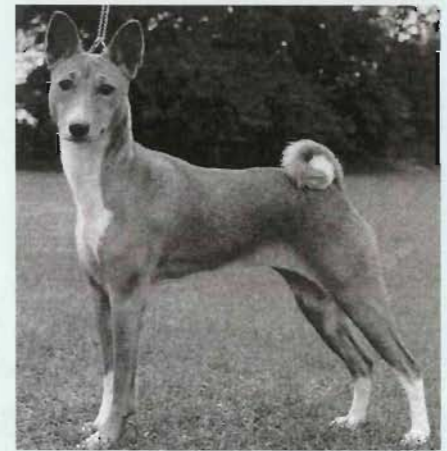
Am Ch Cambria's Ti-Mungai Photo by Joan Ludwig

worldwide at a time when most people thought the breed came in only one colour.

Coming more up-to-date, for third place I choose **Aus Ch Mzalia**

Private Dancer. I judged her at the Basenji Club of Victoria ruby anniversary championship show in Australia. Such a classic type with beautiful head and expression, good wrinkle and small hooded ears, fine yet strong bone and good length of stride. Basenjis in Australia have been bred to a high standard for many years and this bitch certainly reinforces their worldwide reputation.

“”
A beautiful dog with the bonus of being a top sire



Ch Zizunga Queen Bee

RONALD W JAMES JASMORNE



I have confined my selection to dogs that I have actually seen and/or judged.

Ch Zizunga Queen

Bee was a most impressive female that possessed so many of the essential qualities that one looks for in a top drawer specimen of the breed. I well remember seeing her taking the CC and BOB at Crufts as a junior and thinking how correct she was – an impression I was able to fully confirm when I judged her myself.

A male that made a great impression on me was **Aus Grand Ch Afrikenji Hot Sumaknight** whom I made Best in Show at the Basenji Club of New South Wales Championship Show in 2005. He had that lovely short-backed and leggy appearance that is so desirable in the breed. His head and expression were close to perfection and he was most impressive in profile movement.

The multi-titled male Best in Show winner **Ch, Fin, Dan & Int Ch Faraoland Xcuse Me Desmond** is another truly superb Basenji that combines both masculinity and that elegant, gazelle-like appearance. Bred in Sweden, he was campaigned to his English title and has sired Champion offspring in the UK. When I awarded him one of his CCs I found him to be a totally honest dog that was absolutely correct to go over and who did not disappoint on the move. I had the exactly same impression when making him Best of Breed at a Finnish Show a little later in his career.

After much thought my choice in order of preference would be the males Ch, Fin, Dan & Int Ch Faraoland Xcuse Me Desmond and Aus Grand Ch Afrikenji Hot Sumaknight and then the female Ch Zizunga Queen Bee.

“”
A most impressive female



Ch Fulafuture of the Congo
Photo courtesy of the Kennel Club Picture Library



Aus Ch Mzalia Private Dancer
Photo courtesy of Karen Hyland

TURN TO PAGE 57 TO SEE OUR NEW FEATURE:

Q&A B's

This month we ask Kennel Club Accredited Breeder Tina Morris questions about the world of dogs and other aspects of her life...

NEXT MONTH'S JUDGES' CHOICE: THE SCHIPPERKE

Judges' Choice

MICHAEL QUINNEY ADORAM



I remember distinctly from my childhood the Andersley, Littlebreach and Riviana kennels. The latter was owned by Phyllis Cook who lived in the next village to me. The headmistress of a preparatory girls' school and always wearing a hat, Miss Cook had a reputation as a formidable figure at Shelford ringcraft classes, but she did not frighten me



Ch Neyeliz Cascade Photo by Diane Pearce

and I often held on to her dogs whenever she required a helper.

My first choice is the successful stud dog, **Ch & Aus Ch Afrika Royal Challenge of the Congo**

who rekindled my interest in the breed. Masculine, elegant, gazelle-like and a striking red colour, 'Aussie' had an attribute which is rarely seen or appreciated these days – sound movement with decent width and drive. It is generally acknowledged now that Australia is a world leader in the breeding of Basenjis but, at the time that he was imported, this idea was quite new.

My second choice is Aussie's son, **Ch St Erme Jolly Swagman**, another good stud dog. Tall and elegant and with a beautiful head and expression, he was also a beautiful orange red colour. Fine bone but with strength – people often think the finer the better, but a Basenji must not have weedy bone. A long neck completed the overall picture of quality.

My third choice is **Ch Neyeliz Cascade**, yet another top stud dog. I awarded him

Tall and elegant with a beautiful head



Ch St Erme Jolly Swagman Photo by John Hartley

BOB as a puppy and was struck by his leggy appearance and long crested neck. Once again, his bone was fine but strong. A number of clever breeders combined Cascade and Aussie's bloodlines during the '80s which helped to counteract the excessive amount of white which had been creeping into the breed.

SIMON PARSONS DEAVITTE



'Lightly built, finely boned, gazelle-like grace': it's hardly surprising that the majority of the Basenjis who appealed most to me have been bitches.

For me, those words were epitomised by **Ch Neyeliz Castanea**. As I went over her on my first open show appointment, it struck me immediately that this was the type I should be looking for – nothing coarse or clumsy, shortest of backs, fine but not weedy, exquisite chiselling and wrinkling in the face, smallest, perfectly carried ears, arched neck and aristocratic elegance, as fastidious as she was beautiful.

Another with the same stamp and just a shade more substance was **Int Ch Borasus Juel Of The Sun**, Australian-bred and living in Finland. In addition she had the correct long but unexaggerated swinging stride – so hard to achieve in combination with ideal 'high on leg' proportions – and the air of a queen.

Coming up-to-date, when I judged last year I found it impossible to choose between two great bitches, **Ch & Am Ch Klassics Million Dollar Baby at Tokaji**



Int Ch Borasus Juel Of The Sun
Photo by David Dalton

and **Ch Zordia's Wazzala**. They excel in different ways – American-bred Millie is so refined, so neatly put together with an absolutely perfect front and makes an unbeatable picture in profile with incomparable side movement in harmony with handler. Wazzala's expression, arched neck, balance, tailset and quality, with a hint of the breed's characteristic naughtiness, are equally appealing. On the day, mature Millie's immaculate performance carried her through, so I suppose she'll have to be my third choice.

So refined, so neatly put together



Ch & Am Ch Klassics Million Dollar Baby
at Tokaji Photo by Carol Ann Johnson



Ch Neyeliz Castanea