

204 *The Standard*



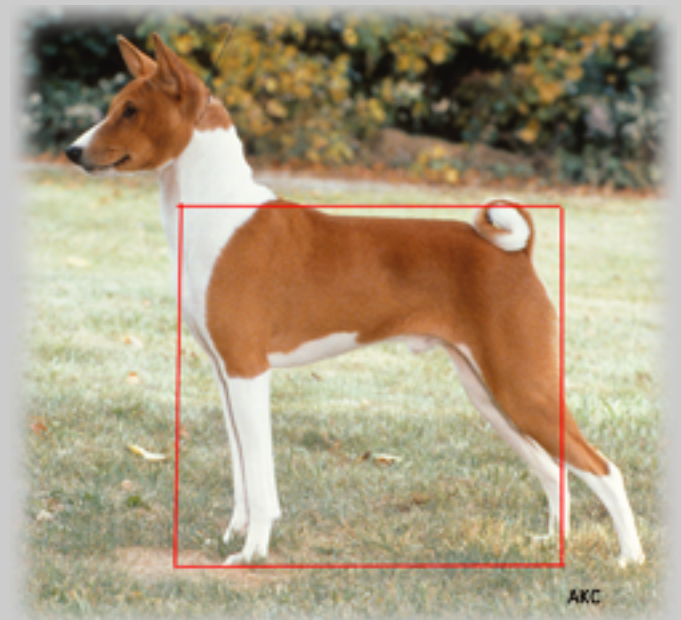
Prepared by Susan Coe, Laurie Stargell and Pamela Geoffroy

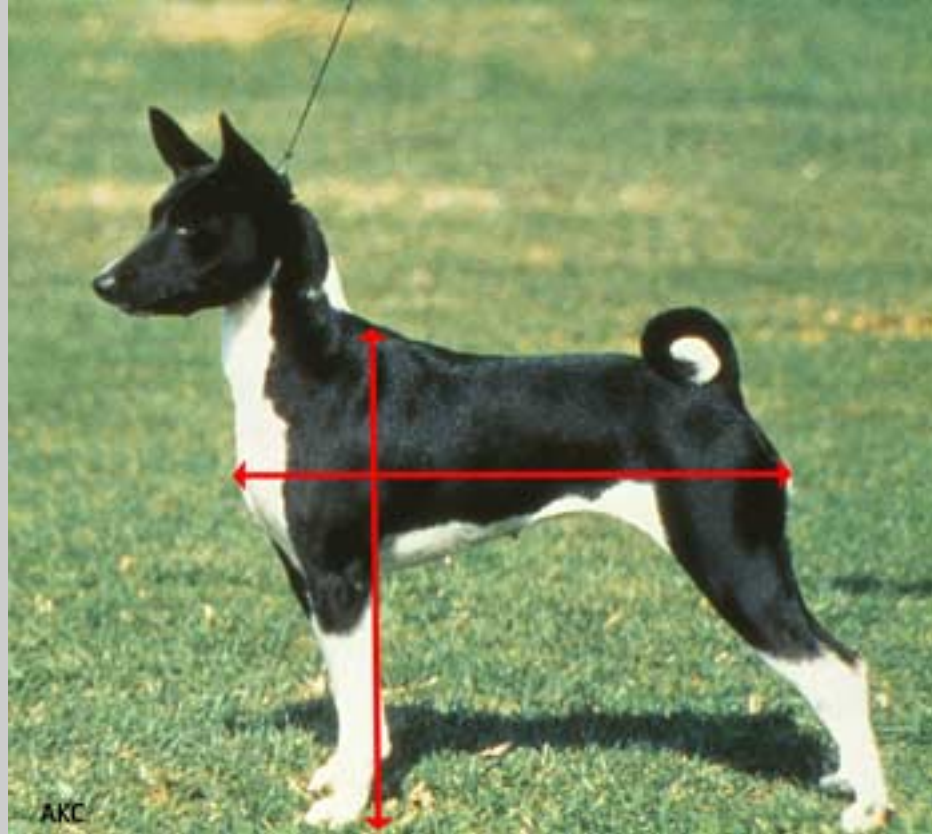
Size, Proportion, Substance

The Basenji Standard states:

Ideal height for dogs is 17 inches and bitches 16 inches. Dogs 17 inches and bitches 16 inches from front of chest to point of buttocks. Approximate weight for dogs, 24 pounds and bitches, 22 pounds. Lightly built within this height to weight ratio.

Measuring the dog is very simple. **"Ideal height for dogs is 17 inches and bitches 16 inches. Dogs 17 inches and bitches 16 inches from front of chest to point of buttocks."**





With the dog standing in a relaxed manner, that is not stretching up to make itself impressively tall, the height is measured from ground to the highest point of the shoulder blade. The length is measured from the slight forechest that all dogs have to the furthestmost point of the rear, that is usually at the end of the pelvis at the point of buttocks.

"Approximate weight for dogs, 24 pounds and bitches, 22 pounds." The weight is difficult to show in a photo. As a breeder you should at least understand what your own dogs weigh and measure as compared to the ideal as described in the Standard. You may find that other breeders have dogs that look rather different even though they are correct for the Standard. It is very difficult to be sure about size, weight and substance without actually measuring and weighing the dogs.

Generally dogs that appear square may actually be up to about 1 inch longer than tall. These slightly long dogs that appear square usually have particularly good shelf in the rear and good correct angulation in the front.

A dog an inch taller than standard should probably weigh a couple additional pounds to stay in balance and have the correct substance, body and bone mass. A long-bodied dog would similarly weigh more to have the correct substance. An additional part of substance is having the correct bone shape and size to maintain a balanced dog.



"Lightly built within this height to weight ratio." The weights and sizes given should lead to a dog that looks masculine and a bitch that is feminine as shown in the examples above. The dog and bitch above are good examples of desired size and substance. The Basenji is a moderate dog so should be neither as heavy and boxy as a pulling breed nor as narrow as the specialized sighthound breeds.



The two photos above show a bitch (left) lacking in body substance. Note that her chest does not reach her elbow and she is too narrow. The dog (right) is rather heavy and too long. The photo below right shows good substance for a bitch as seen from the front.

It is easy to be confused in the show ring if all the dogs are either too large or too small. Photos don't always show substance or size correctly. Even in person weight to height/length ratio can be confusing. In addition, something like muscle quality can affect the actual weight of the dog. With your own dogs at home you can weigh and measure to begin to understand the substance of the dogs you are using in your breeding program.

Another consideration when dealing with weight and substance is maturity. A young dog may well be a bit narrow and lack substance. Most dogs keep maturing until they are about 3 years old when they gain their final body depth and width. Often the head also matures until around that same age. Don't assume the cutest puppy is going to turn out to be the most correct in size, weight and substance as a mature adult.

Copyright the Basenji Club of America 2013

Breeders

[CLICK](#) to return to College for Basenji

Contact the Basenji University with comments, questions, updates and Workbooks at [**BasenjiU@basenji.org**](mailto:BasenjiU@basenji.org)

We are indebted to the Basset Hound Club of America for the use of their Basset Hound University templates.

